



Catchbox Plus & Artome Unit

What will you get?

- Professional audio without separate mixers and processors
- Distortion free audio by matching signal levels
- A system that easily adapts to video conferencing and multi-source events

What will you need?

- Catchbox Plus system (Hub receiver and microphones)
- Artome smart furniture unit
- Catchbox XLR-to-3pin adapter (purchased separately)
- Artome remote or Artome Connect app



ARTOME

Step-by-step instructions

1. Configure Artome input to line level

To avoid distortion, the Artome unit must be set to Line Level to match the Catchbox Hub's output.

Via the Artome Remote Control

- 1.1. Use the remote to navigate to the audio settings and select **Line Level mode** for the microphone inputs. Long-press the MUTE button on the remote for 10 seconds. Two left-most LEDs on the button panel illuminate and a chime is heard.

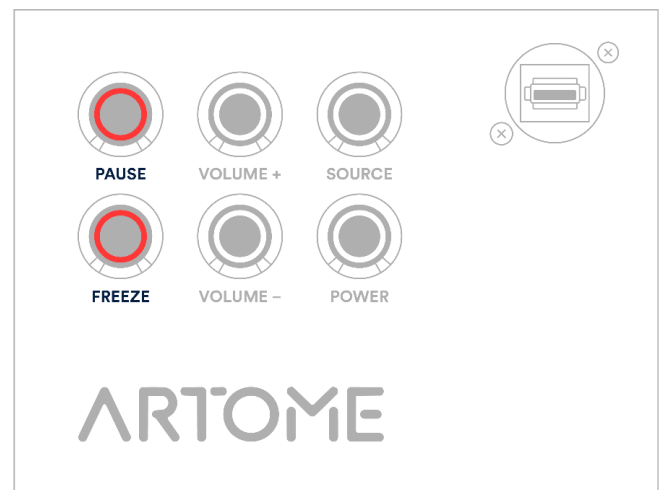
Artome remote



1

Press and hold the remote's  button for **10s** until **PAUSE** and **FREEZE** turns red.

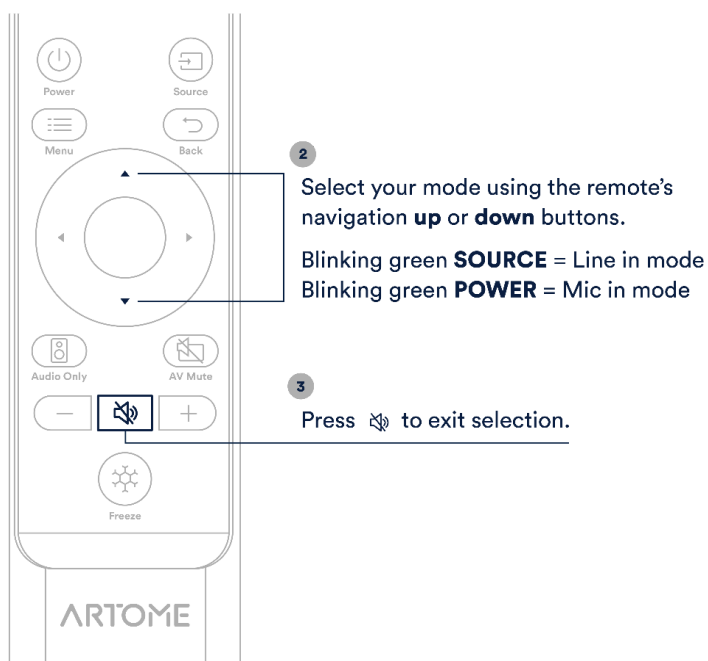
Artome control panel



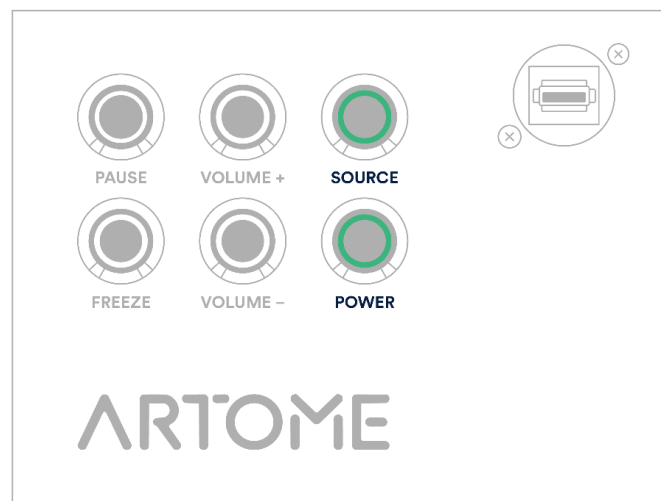


- 1.2. Use the up/down buttons on the remote to select between line and mic level input mode.
 - 1.2.1. Mic mode is indicated by the blinking POWER button.
 - 1.2.2. Line mode is indicated by the blinking SOURCE button.
- 1.3. When line mode is selected, use the left/right buttons to adjust the input gain.
- 1.4. Confirm the selection with the remote's MUTE button.

Artome remote



Artome control panel





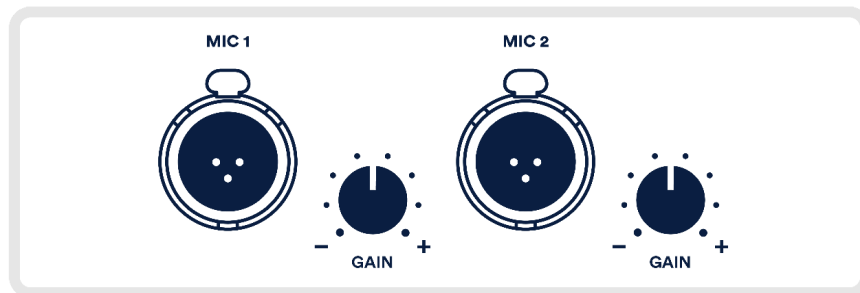
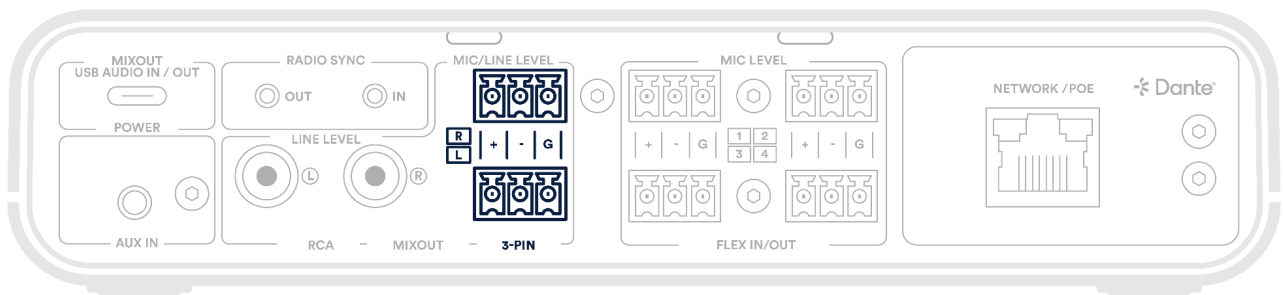
Via the Artome Connect app

Use the Artome Connect app to access the settings and switch the input mode.

Go to **SETTINGS → AUDIO** and set the **BALANCED LINE-IN MODE → LINE-IN**.

2. Configure Catchbox Hub output

- 2.1. Connect the Hub's 3-PIN Mixout (L or R) to an Artome XLR input



- 2.2. Use the Hub's front-panel user interface and navigate to **OUT → MIXOUT 3-PIN** and set to **LINE LEVEL**
- 2.3. Route the mics in the Mix Configuration menu by enabling the needed MIC channels.



ARTOME

Tips for better audio

→ On the Catchbox Hub

In-Room Voice Lift: Use the Voice Lift Level feature on the Hub to amplify in-room microphone audio. This replaces complex manual gain adjustments and keeps sound consistent for the whole room.

Optimized Video Calls: When using any of the video conferencing platforms (Teams, Zoom, Meet, etc.), connect your PC to the Hub, set it to Speakerphone mode and use the Hub as the primary audio device. Hub's built-in DSP will ensure the best hybrid meeting audio quality.

→ On the Artome unit

Speaker EQ: Adjust the levels of *Bass* (controls low frequencies) and *Treble* (control higher frequencies). This allows you to adjust the sound to the room's acoustics, making speech clearer or media playback richer.

Volume Limits: Set a *Startup Volume* so the system always begins at a safe level, and a *Max Volume* to prevent the audio from being turned up too high.

External PA Mode: If you are connecting to a larger external sound system, use the *Artome Speaker Mute* setting. This disables the internal Artome speakers while keeping the signal active for the external system.